

THE TRANSFER TEST

www.thetransfertest.com | sales@thetransfertest.com

Teachers copy

P7

School Edition

Practice Test Paper 8

Time: 60 minutes

VERSION 2 (with Practice Test section)

for **SEAG** Entrance Assessment

English - Practice Test

In this question there is either **one** punctuation mistake or **no** punctuation mistake. Find the group of words with the mistake in it and mark its letter on your answer sheet. **If there is no mistake, mark N.**

P1 'Why are you still up' asked Mum. Mia was still playing her games console.
A B C D

In this question you have to choose the **best** word to complete the sentence, so that it makes sense and is written in correct English. Choose **the** best answer and mark its letter on your answer sheet.

P2 We gone to the earlier show
A B C D E

if our train hadn't been late.

In this question there is either **one** spelling mistake or **no** spelling mistake. Find the group of words with the mistake in it and mark its letter on your answer sheet. **If there is no mistake, mark N.**

P3 The sunset was incredible, and they didn't want to leave the beach.
A B C D

Read this passage to yourself.

It was some three hours after sunset when Solomon Owl at last reached Farmer Green's place. All was quiet in the chicken house because the hens and roosters and their families had long since gone to roost. And except for a light that shone through a window, the farmhouse showed not a sign of life.

Everything was as Solomon Owl wished it—or so he thought, at least, as he alighted in a tree in the yard to look about him. He wanted no one to interrupt him when he should go nosing around the chicken house, to find an opening.

To his annoyance, he had not sat long in the tree when the wood-shed door opened. And Solomon stared in amazement at the strange sight he saw.

Answer this question. Choose **one** answer from the options below and mark its letter on your answer sheet.

P4 What was Solomon Owl hoping to do?

- A open the wood-shed door
- B find an opening in the chicken house
- C go nosing around the farmhouse
- D find the hens and roosters
- E see a strange sight

For this question, you have to **write your answer** in the box provided on your answer sheet (box P5).

P5 Which **one word** in lines 8-9 means 'looked'?



Maths - Practice Test

P6

How many sides does a quadrilateral have?

- A 6 B 5 C 2 D 4 E 3

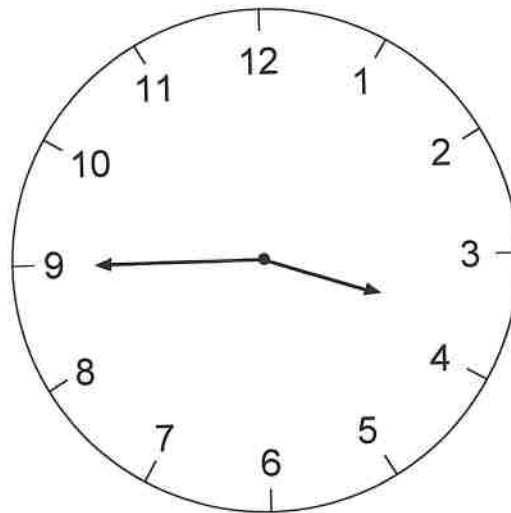
P7

6 11 10 15 14 19 — —

What are the next two numbers in this sequence?

- A 18, 23 B 24, 23 C 24, 29 D 18, 24 E 18, 17

P8



What is the time shown on the clock?

- A 9.17 B 3.45 C 3.40 D 9.15 E 10.45

For these questions you have to **write your answers** in the boxes provided on your answer sheet (box P9 and P10). The units of measurement have been given.

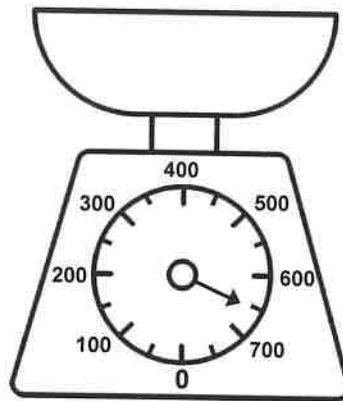
P9

Sam buys three bottles of water costing £1.29 each.

How much does Sam pay altogether?

P10

The weight of a parcel is shown in GRAMS on the scales below.



What is the weight of the parcel in KILOGRAMS?



English - Main Test

In these exercises there are some mistakes with **punctuation**. On each numbered line there is either **one** mistake or **no** mistake. Find the group of words with the mistake in it and **mark its letter on your answer sheet**. If there is no mistake, mark **N**.

Punctuation Exercise

1 'We haven't packed the cutlery or the cups,' she shouted. 'Where are they?'
A B C D

2 Tom couldn't decide whether, to walk or cycle his bike to the train station.
A B C D

3 The teachers hoped to encourage a love of reading amongst the students.
A B C D N

4 We will need five bags of coal and two bags of logs? It's
A B C
going to be a cold night.
D

5 'I shouldn't have gone to the gallery Yesterday,' replied Anna. 'I've
A B C
too much to do.'
D

In this exercise you have to choose the **best** word, or **group of words**, to complete each numbered line so that the passage makes sense and is written in correct English. Choose the best answer and **mark its letter on your answer sheet**.

Grammar Exercise

6 She walked confidently
A B C D E
the stage to start the show.

7 You won't get your pocket money on Friday
 you tidy your room.
A B C D E

8 My mum
A B C D E
home a new pair of jeans for me but I didn't like them.

9 I would describe her as an
 listener.
A B C D E

10 I like to my guitar when I get
A B C D E
home from work each day.

In this exercise there are some **spelling** mistakes. On each numbered line there is either **one** mistake or **no** mistake. Find the group of words with the mistake in it and **mark its letter on your answer sheet**. If there is no mistake, mark **N**.

Spelling Exercise

11 There was ^{too} too much food at the party, and therefore much of it went to waste.
A B C D

12 In order to gain the necessary ^{knowledge} knowlege, Jim embarked on a year-long course.
A B C D

13 The policeman redirected the traffic as there had been a ^{collision} colision on the road.
A B C D

14 Unfortunately, much of the information given turned out to be extremely inaccurate.
A B C D N

15 She was ^{ably} understandebly upset when she was unable to see her favourite comedian.
A B C D

Read the **whole** passage carefully, then answer the questions that follow.

A Jolly Fellowship

1. We started out on our storming expedition on a Tuesday night, about nine o'clock; we had a
2. latch-key, so we could come home when we pleased. Rectus carried the rope, and I had the
3. grapnel, wrapped in its cotton wool. We put newspapers around these things, and made
4. pretty respectable packages of them. We did not go down the sea-wall, but walked around
5. through some of the inner streets. It seemed to us like a curious expedition. We were not
6. going to do anything wrong, but we had no idea what the United States government would
7. think about it. We came down to the fort on its landward side, but our attack was to be made
8. upon the waterfront, and so we went around that way, on the side farthest from the town.
9. There were several people about yet, and we had to wait. We dropped our packages into the
10. moat, and walked about on the water-battery, which is between the harbour and the moat,
11. and is used as a sort of pleasure-ground by the people of the town. It was a pretty dark
12. night, although the stars were out, and the last of the promenaders soon went home; and
13. then, after giving them about ten minutes to get entirely out of sight and hearing, we jumped
14. down into the moat, which is only five or six feet below the water-battery, and, taking our
15. packages, went over to that part of the wall which we had fixed upon for our assault.

16. We fastened the rope to the grapnel, and then Rectus stood back while I made ready for the
17. throw. It was a pretty big throw, almost straight up in the air, but I was strong, and was used
18. to pitching, and all that sort of thing. I coiled the rope on the ground, took the loose end of it
19. firmly in my left hand, and then, letting the grapnel hang from my right hand until it nearly
20. touched the ground, I swung it round and round, perpendicularly, and when it had gone
21. round three or four times, I gave it a tremendous hurl upward.

22. It rose beautifully, like a rocket, and fell inside of the ramparts, making only a little thud of a
23. sound.

24. "First-rate!" said Rectus, softly; and I felt pretty proud myself.

25. I pulled on the rope, and found the grapnel had caught. I hung with my whole weight on it,
26. but it held splendidly.

27. "Now, then," said I to Rectus, "you can climb up. Go slowly, and be very careful. There's no
28. hurry. And mind you take a good hold when you get to the top."

29. We had arranged that Rectus was to go first.

30. This did not look very brave on my part, but I felt that I wanted to be under him, while he was
31. climbing, so that I could break his fall if he should slip down. It would not be exactly a
32. perpendicular fall, for the wall slanted a little, but it would be bad enough. However, I had
33. climbed up worse places than that, and Rectus was very nimble; so I felt there was no great
34. danger.

35. Up he went, hand over hand, and putting his toes into nicks every now and then, thereby
36. helping himself very much. He took it slowly and easily, and I felt sure he would be all right.
37. As I looked at him, climbing up there in the darkness, while I was standing below, holding
38. the rope so that it should not swing, I could not help thinking that I was a pretty curious kind
39. of a tutor for a boy. However, I was taking all the care of him that I could, and if he came
40. down he'd probably hurt me worse than he would hurt himself. Besides, I had no reason to
41. suppose that old Mr. Colbert objected to a little fun. Then I began to think of Mrs. Colbert,
42. and while I was thinking of her, and looking up at Rectus, I was amazed to see him going up
43. quite rapidly, while the end of the rope slipped through my fingers. Up he went, and when I
44. ran back, I could see a dark figure on the wall, above him. Somebody was pulling him up.

45. In a very few moments he disappeared over the top, rope and all!

46. Now, I was truly frightened. What might happen to the boy?

47. I was about to shout, but, on second thoughts, decided to keep quiet; yet I instantly made up
48. my mind that, if I didn't see or hear from him pretty soon, I would run around to the gate and
49. bang up the people inside. However, it was not necessary for me to trouble myself, for, in a
50. minute, the rope came down again, and I took hold of it. I pulled on it and found it all firm,
51. and then I went up. I climbed up pretty fast, and two or three times I felt a tug, as if
52. somebody above was trying to pull me up. But it was of no use, for I was a great deal stouter
53. and heavier than Rectus, who was a light, slim boy. But as I neared the top, a hand came
54. down and clutched me by the collar, and some one, with a powerful arm and grip, helped me
55. over the top of the wall.

Please answer these questions. (Look at the passage again if you need to.)
You should choose the **best** answer and mark its letter on your answer sheet.

- 16** **What does this story start with?**
- A a question
 - B direct speech
 - C narrative**
 - D a description of the setting
 - E a description of the main character

- 17** **Look at lines 1-15.**
What were the boys planning to 'attack' that evening?
- A the United States government
 - B a fort**
 - C the pleasure-ground
 - D the harbour
 - E the promenaders

- 18** **Why did the boys have to wait a while before they could carry out their mission?**
- A It was too dark.
 - B They were not sure where they were going.
 - C They had dropped their packages in the moat.
 - D They went the wrong way.
 - E There were too many people around.**

- 19** **Look at lines 16-30.**
Why was the narrator proud of himself?
- A because he threw the grapnel really well**
 - B because he was strong
 - C because he was good at pitching
 - D because he gave instructions to Rectus
 - E because he was able to swing the rope round and round

20

Why did the narrator let Rectus climb up first?

- A As he wasn't very brave.
- B Rectus was more nimble than him.
- C He thought Rectus would fall.
- D He wanted to be able to catch Rectus if he did fall.**
- E Rectus was light and he wanted to check the rope held.

21

Why did the narrator feel that Rectus probably wouldn't come to any harm when climbing the wall?

- A Rectus had lots of climbing experience.
- B Rectus was very agile.**
- C It was the best place to climb.
- D The wall was a little slanted.
- E The wall wasn't very high.

22

Look at lines 35-47.

What was at the top of the wall that frightened the narrator?

- A Rectus
- B a dark figure**
- C a gate
- D Mr Colbert
- E Mrs Colbert

For these questions you have to **write your answers**, neatly, in the boxes provided on your answer sheet.

23

At what time did the boys begin their journey?

9pm

24

What was the grapnel wrapped in?

cotton wool

25 Which one word in lines 1-4 means the same as 'going on a journey'?

expedition

26 Which eight-word phrase from lines 30-32 explains that Rectus would not fall straight down?

It would not be exactly a perpendicular fall.

27 Which part of speech is 'nicks' as it appears in the passage? (line 35)

noun

28 Which part of speech is 'instantly' as it appears in the passage? (line 47)

adverb

Maths - Main Test

29

In a class of 28 children, a $\frac{1}{4}$ of them do NOT go to after school club.

How many children GO to after school club? $\frac{3}{4}$ $28 \div 4 = 7$
 $28 - 7 = 21$

A 21

B 7

C 14

D 28

E 20

30

$$z \div 7 = 8$$

$$8 \times 7 = 56$$

What number is represented by the letter z?

A 64

B 56

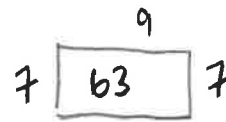
C 66

D 54

E 58

31

A rectangle has an area of 63 cm^2 .



$$7 \times 9 = 63$$

If two of the sides are each 7 cm long, what is the length of each of the other two sides?

A 6.3 cm

B 4.5 cm

C 8 cm

D 7.5 cm

E 9 cm

32

How many days were there in the first four months of 2023?

31

31

30

28

120

A 118

B 119

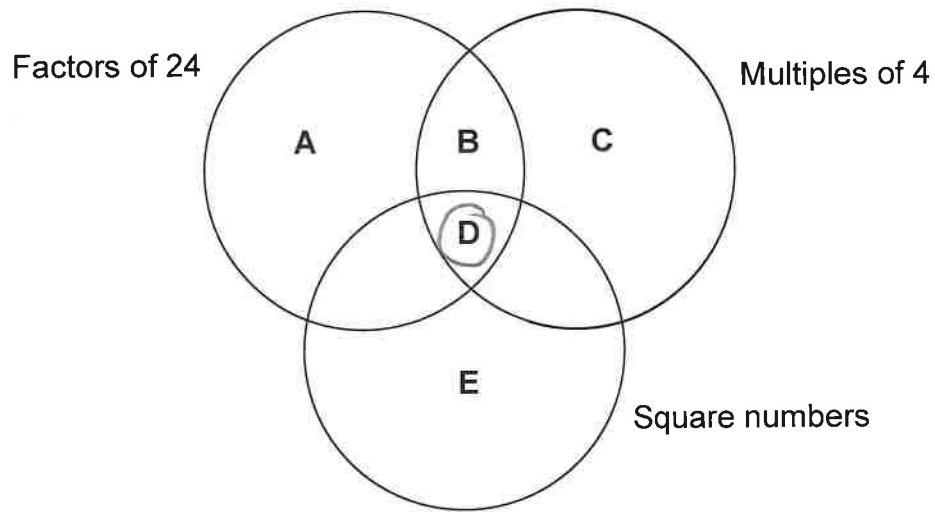
C 120

D 121

E 122

33

John is placing numbers between 1 and 20 in the Venn diagram below.



Where should John put the number 4?

A A

B B

C C

D D

E E

34

A map has the following scale:

1 centimetre = 7 kilometres

The distance between two towns on the map is 9.4 cm.

$$\begin{array}{r} 9.4 \\ \times 27 \\ \hline 65.8 \end{array}$$

What is the actual distance between the two towns in kilometres?

A 66.8 km

B 65.8 km

C 63.8 km

D 658 km

E 58.8 km

35

What is the sum of the first five square numbers?

A 42

B 54

C 55

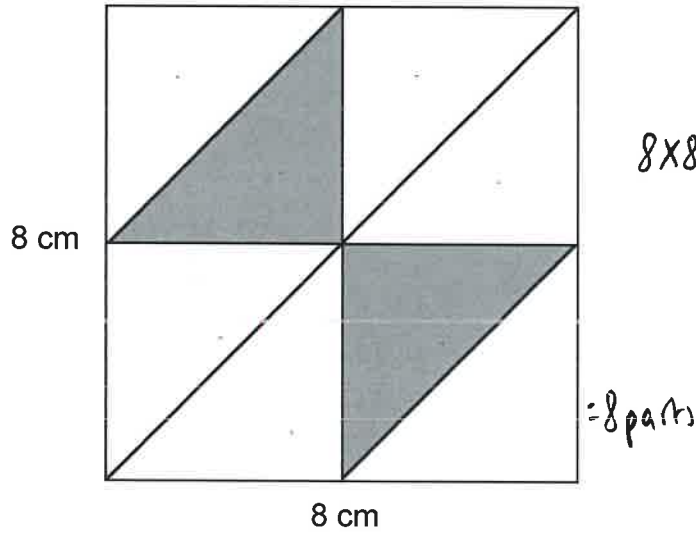
D 60

E 61

$$\begin{array}{l} 1 \times 1 = 1 \\ 2 \times 2 = 4 \\ 3 \times 3 = 9 \\ 4 \times 4 = 16 \\ 5 \times 5 = 25 \\ \hline 55 \end{array}$$

36

The square below is divided into eight equal triangles.

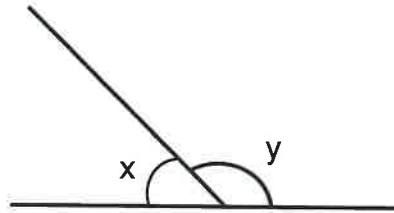


What is the area of the shaded part of the square?

- A 8 cm^2 **B 16 cm^2** C 12 cm^2 D 24 cm^2 E 18 cm^2

37

Look at the diagram below.



Which one of the following statements is true?

- A x is a reflex angle
B y is an acute angle
C y is an obtuse angle
D y a reflex angle
E x is an obtuse angle

Jamila took the temperature each day for a week.

Day	Temperature
Monday	2 °C
Tuesday	-2 °C
Wednesday	-3 °C
Thursday	-7 °C
Friday	-10 °C
Saturday	1 °C
Sunday	-1 °C

Which day was the warmest?

- A Friday
- B Saturday
- C Thursday
- D Wednesday
- E Monday**

39

Three angles of a quadrilateral are 145°, 110° and 45°. ³⁶⁰

$$\begin{array}{r} 145 \\ 110 \\ \underline{45} \\ 300 \end{array}$$

What is the fourth angle?

A 60°

B 55°

C 50°

D 45°

E 40°

40

$$5.9 \times 100 =$$

A 59

B 599

C 0.059

D 590

E 5900

41

There are 24 boys and 36 girls in year 7.

$\frac{36}{60} = \frac{6}{10}$

What percentage of year 7 are girls?

A 33%

B 45%

C 50%

D 55%

E 60%

42

Which of these is a prime number?

A 29

B 15

C 35

D 27

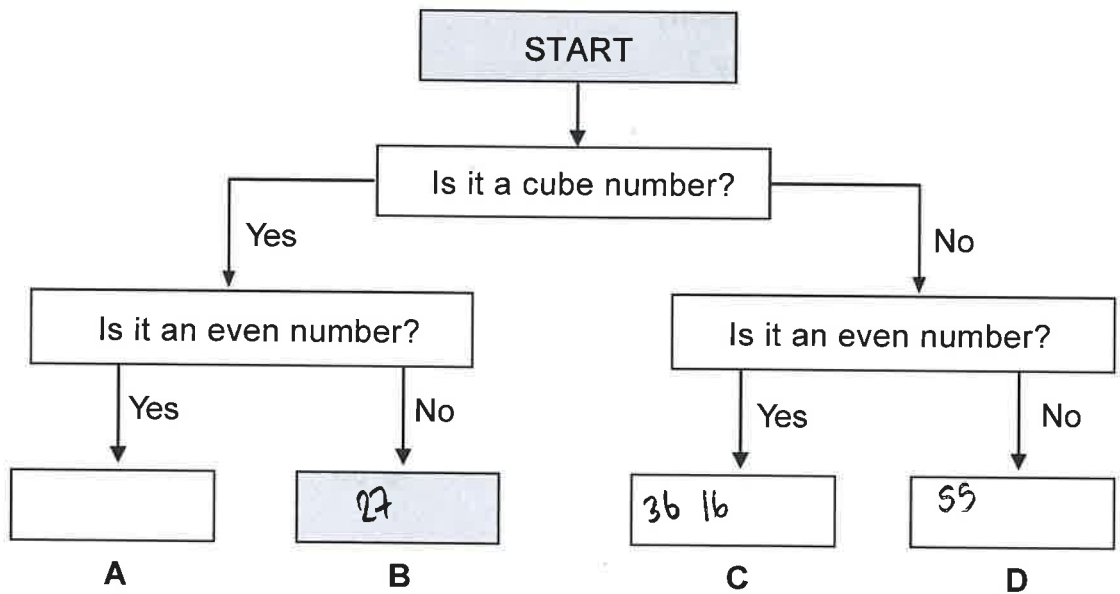
E 39

43

Look at the numbers in the box below.

~~36~~ ~~55~~ ~~64~~ 27 16 49

Now look at the decision tree below.



Which number should go in the shaded box?

A 16

B 27

C 36

D 49

E 64

44

$$\boxed{8}9.10 - 46.23 = 42.\boxed{8}7$$

$$\begin{array}{r} 46.23 \\ + 42.87 \\ \hline 89.10 \end{array}$$

Jess's calculator displays the sum entered and the answer. The calculator works correctly except that one digit always appears as a blank space.

What is the missing digit?

A 5

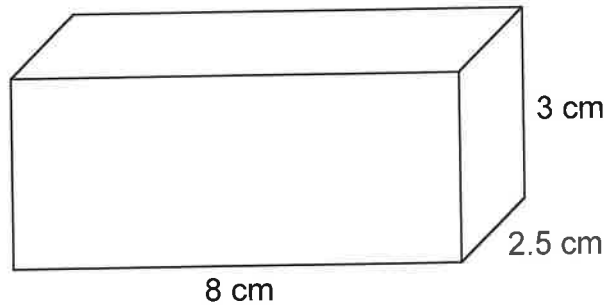
B 9

C 8

D 4

E 2

45



$$\begin{array}{r} 2.5 \\ \times 48 \\ \hline 20.0 \\ \times 3 \\ \hline 60.0 \end{array}$$

What is the volume of this cuboid?

A 13.5 cm³

B 60 cm³

C 52.5 cm³

D 60.5 cm³

E 59.5 cm³

46

Michael is packing packets of crisps into boxes. He is putting 36 packets of crisps in each box. He packs 11 boxes of crisps in total.

$$\begin{array}{r} 36 \\ \times 11 \\ \hline 36 \\ 360 \\ \hline 396 \end{array}$$

How many packets of crisps does he pack altogether?

A 360

B 369

C 396

D 366

E 397

47

Which 3D shape has 5 faces and 6 vertices?

- A cube
- B square-based pyramid
- C cuboid
- D triangular prism**
- E triangular pyramid

48

Lola was 1.35 metres tall.
She grew 4 centimetres more.

$$\begin{array}{r} 1.35 \\ + \quad 4 \\ \hline 1.39 \end{array}$$

How tall was she then in metres?

- A 1.75 m
- B 5.35 m
- C 1.309 m
- D 2 m
- E 1.39 m**

49

Thirteen thousand, five hundred and four.

Which answer shows this written as a number?

- A 1354
- B 13540
- C 13504**
- D 13054
- E 13.54

50

A movie finishes at 10.35 pm.
It lasted for 1 hour and 45 minutes.

$$\begin{array}{r} -1\text{hr} \quad -45 \\ 10:35 \\ \hline 8:50 \end{array}$$

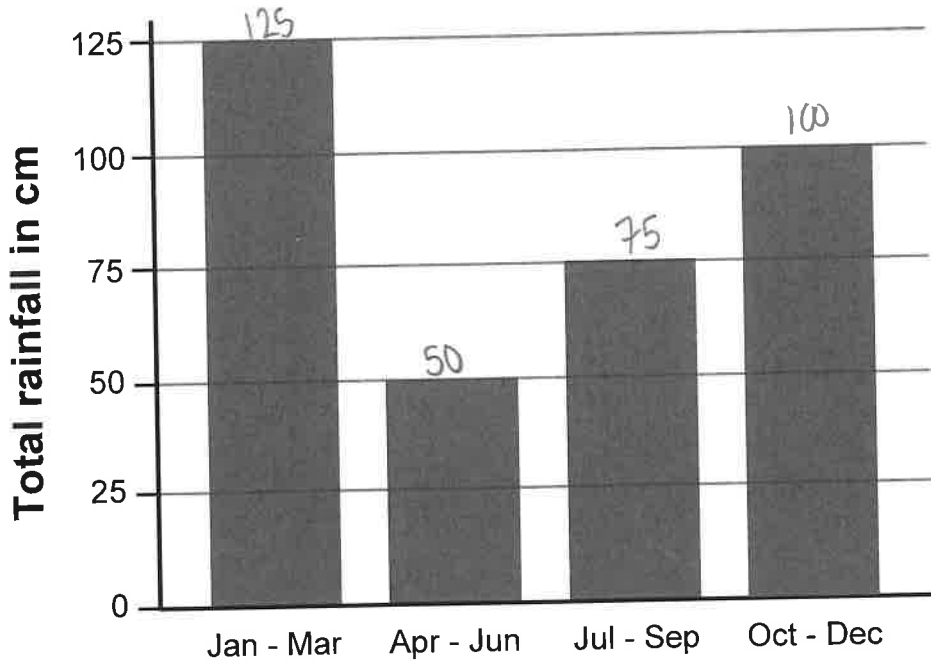
What time did the movie start?

- A 7.50 pm
- B 8.40 pm
- C 8.50 pm**
- D 8.20 pm
- E 9.50 pm

For questions 51–56, you have to **write your answers** in the boxes provided on your answer sheet. The units of measurement have been given.

51

The bar chart shows the rainfall over a year in a town.



How many cm of rain fell altogether in the town over the year?

350 cm.

52

The 24-hour clock time shows 13:15.

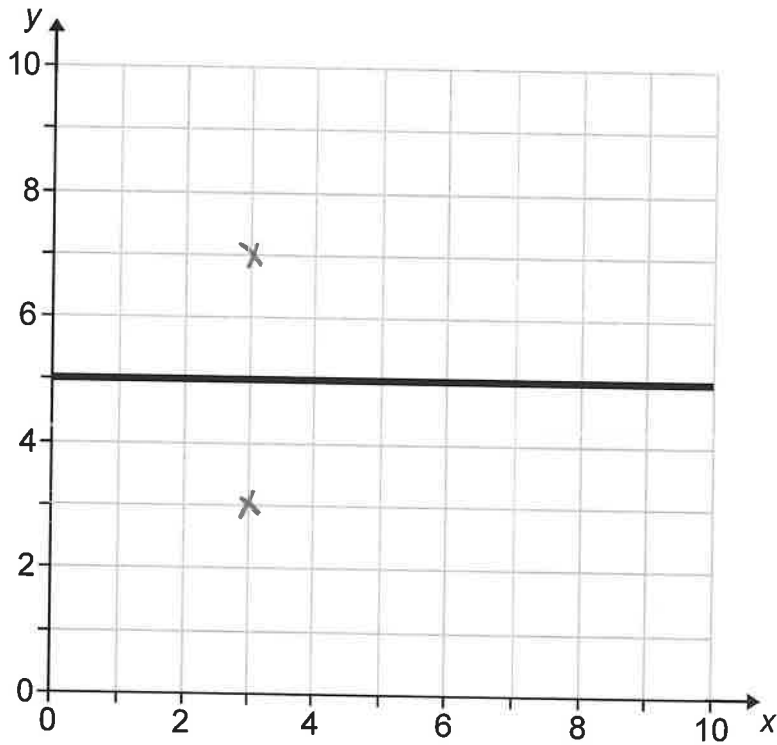


1:15
9:15

How many hours is it until 9.15 pm?

8 hours.

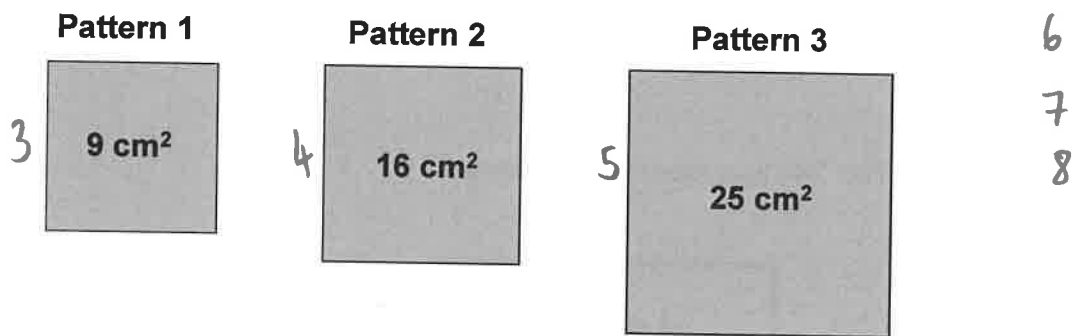
53



This mirror line is drawn on a coordinate grid.
The point (3, 7) is reflected in the mirror line.

What are the coordinates of its reflection? $(3, 3)$

54

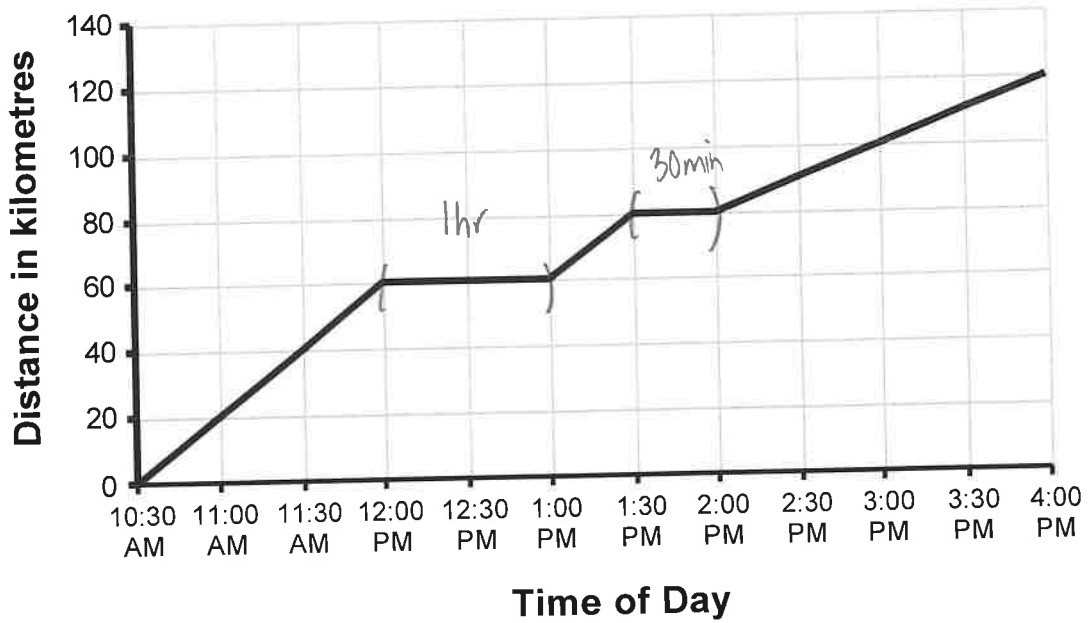


If this pattern continues, and a square has the area of 64 cm²,
what pattern number will this square be?

Pattern 8.

55

Jess goes on a hike across the countryside with friends. They stop for rests on the way. Their journey is shown in the graph below.

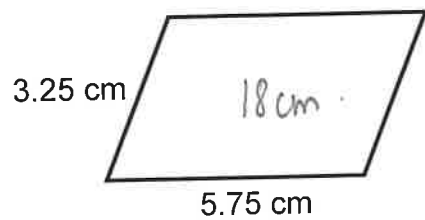
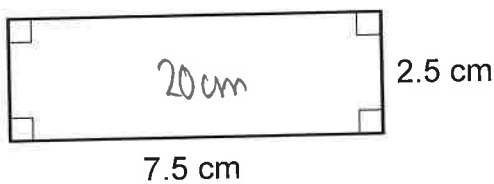
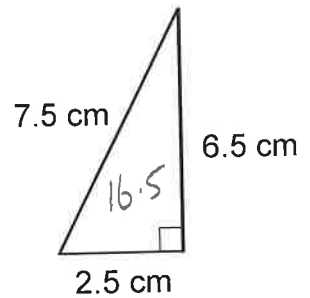
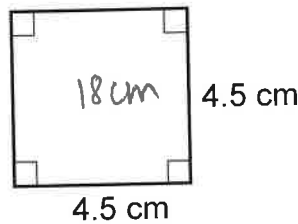
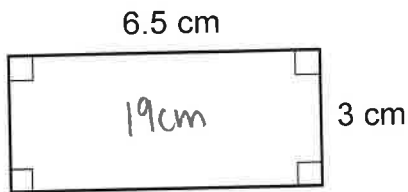


How many minutes in total did Jess and her friends rest?

90mins.

56

Five shapes are shown below.



What is the perimeter of the shape that has the shortest perimeter?

16.5cm.

Copyright © The Transfer Test, 2025

All rights reserved, including translation.
No part of this booklet may be photocopied, modified or
otherwise reproduced without prior written permission.

Printed in Northern Ireland.

THE | TRANSFER TEST

www.thetransfertest.com | sales@thetransfertest.com